

MONTREUX 570G

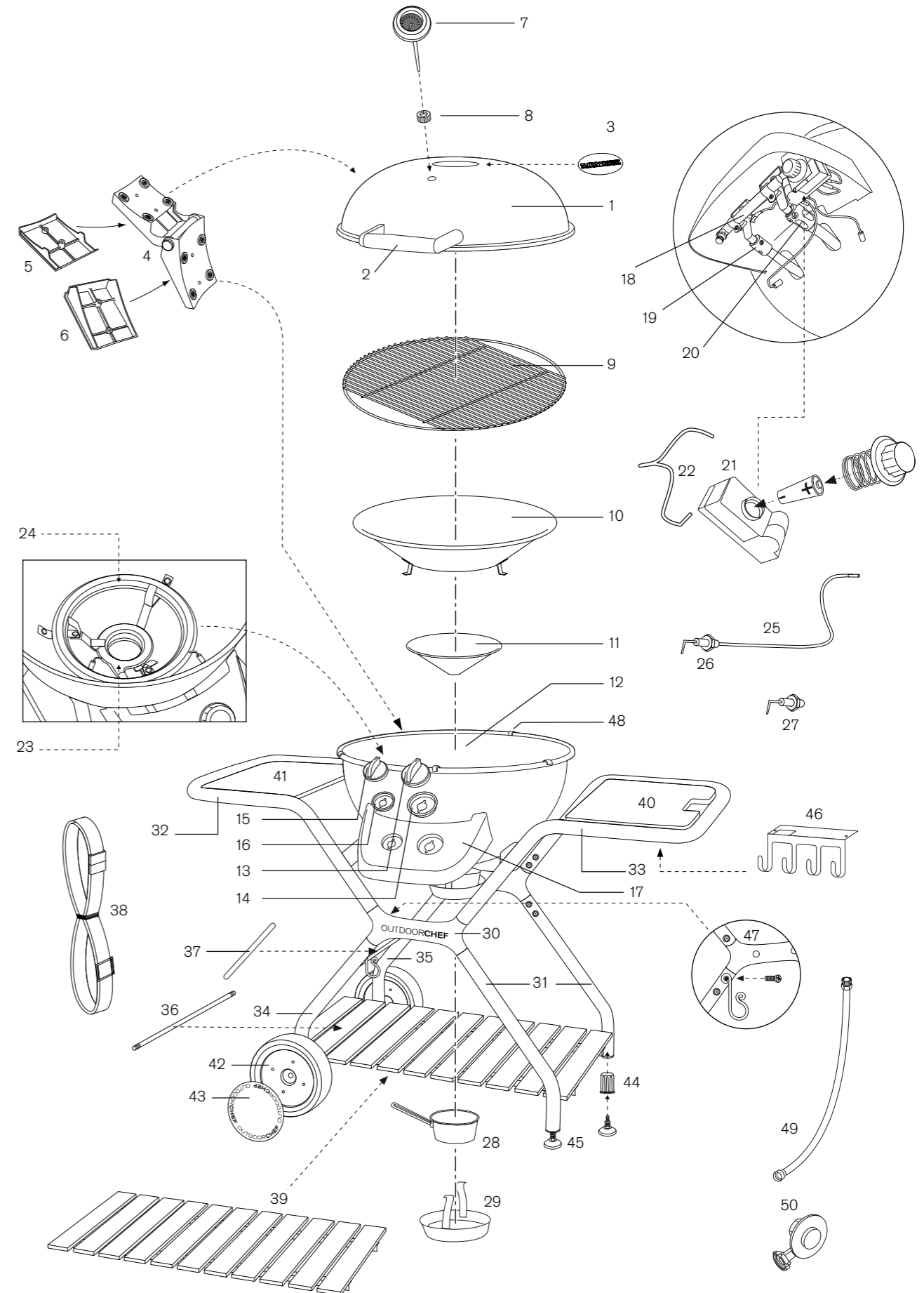


MONTREUX 570G



Spare Parts			Ersatzteil-Liste	
Pos.	Art. Nr.	Description	Beschreibung	
1	18.350.91	Lid black 570 LH	Deckel schwarz 570 LH	
2	18.324.72	Lid handle black	Deckelgriff schwarz	
3	18.822.55	Logo	Logo	
4	18.325.01	Lid hinge complete	Deckelscharnier komplett	
5	18.360.63	Upper lid hinge cover	Deckelscharnier-Abdeckung oben	
6	18.360.64	Lower lid hinge cover	Deckelscharnier-Abdeckung unten	
7	18.850.23	Heat indicator °C/°F	Temperatur Anzeige °C/°F	
8	18.850.22	Heat indicator-nut	Temperaturanzeiger-Befestigungsmutter	
9	18.320.00	Cooking grid	Grillrost	
10	18.324.08	Large Funnel	Grosser Trichter	
11	18.320.03	Small Funnel	Kleiner Trichter	
12	18.350.90	Bowl LH DB Pt black	Kugel LH DB Pt schwarz	
13	18.360.65	Control knob large burner	Gasregulier-Knopf grosser Brenner	
14	18.360.60	Frame for control knob large burner	Rahmen zu Gasregulier-Knopf grosser Brenner	
15	18.360.66	Control knob small burner	Gasregulier-Knopf kleiner Brenner	
16	18.360.61	Frame for control knob small burner	Rahmen zu Gasregulier-Knopf kleiner Brenner	
17	18.323.57	Control panel DB / pearl titan	Bedienungskonsole DB / perl titan	
18	18.340.77	Valve assembly direct DB 30mbar	Ventilsatz direkt DB 30mbar	
18	18.340.78	Valve assembly direct DB 50mbar	Ventilsatz direkt DB 50mbar	
19	18.340.58	Venturiprotection DB small	Venturischutz DB klein	
20	18.340.57	Venturiprotection DB & SB	Venturischutz DB & SB	
21	18.340.87	Pulse ignitor DB	Elektro-Zündung DB	
22	18.340.91	Ignition wire distributor	Zündungskabel Verteiler	
23	18.340.02	Burner small 30mbar	Brenner klein 30mbar	
23	18.340.45	Burner small 50mbar	Brenner klein 50mbar	
24	18.340.68	Burner large 30mbar	Grosser Brenner 30mbar	
24	18.340.67	Burner large 50mbar	Grosser Brenner 50mbar	
25	18.340.12	Ignition wire	Zündungskabel	
26	18.340.11	Piezo electrode large burner	Piezo-Elektrode grosser Brenner	
27	18.340.10	Piezo electrode small burner	Piezo-Elektrode kleiner Brenner	
28	18.323.04	Drip pan	Fettauffangschale	
29	18.323.05	Drip pan carrier	Fettauffangschale Halterung	
30	18.323.59	X-Module pearl titan	X-Module perl titan	
31	18.323.60	Stand-Module pearl titan	Stand-Modul perl titan	
32	18.323.61	Table-Module left pearl titan	Tablar-Modul links perl titan	
33	18.323.67	Table-Module right pearl titan	Tablar-Modul rechts perl titan	
34	18.323.62	Wheel-Module left pearl titan	Rad-Modul links perl titan	
35	18.323.63	Wheel-Module right pearl titan	Rad-Modul rechts perl titan	
36	18.323.64	Axle pearl titan	Radachse perl titan	
37	18.323.65	Bottle fixation bar pearl titan	Flaschenhalterungsstrebe perl titan	
38	18.360.11	Bottle fixation strap	Flaschenhalterungs-Gurt	
39	18.310.26	Bottom shelf, nut brown wood	Bodenrost, Holz nussbraun	
39	18.310.27	Bottom shelf, black wood	Bodenrost, Holz schwarz	
40	18.310.28	Side table right, wood-nut brown	Seitentablar rechts, Holz-nussbraun	
40	18.380.22	Side table right, granite-black	Seitentablar rechts, Granit-schwarz	
41	18.310.30	Side table left, wood-nut brown	Seitentablar links, Holz-nussbraun	
41	18.380.23	Side table left, granite-black	Seitentablar links, Granit-schwarz	
42	18.360.56	Wheel	Rad	
43	18.360.57	Wheel cover	Radabdeckung	
44	18.360.59	Thread insert	Gewindeeinsatz	
45	18.360.37	Height adjustment	Höhenverstellung	
46	18.323.66	Tool holder	Besteck-Halter	
47	18.370.75	Gas hose hook	Gasschlauch-Haken	
48	18.360.86	Protection pin	Schutzstift	
	18.379.21	Hardware Set	Schrauben Set	
49	individual	Gas hose	Gasschlauch	
50	individual	Gas regulator	Gasdruckregler	

Outdoorchef AG operates a policy of continuous product development and improvement. As such we reserve the right to alter product design and or technical specification without giving any prior notice.



MONTREUX 570G

B		Lid		Deckel	
Pos.	Art. Nr.	Description		Beschreibung	
B1	18.371.03	Teflonwasher		U-Scheibe Teflon	
B2	18.371.02	Washer		U-Scheibe	
B3	18.370.27	Screw		Schraube	
B4	18.371.03	Teflonwasher		U-Scheibe Teflon	
B5	18.371.02	Washer		U-Scheibe	
B6	18.370.48	Nut		Mutter	

C		Lid Hinge		Deckelscharnier	
Pos.	Art. Nr.	Description		Beschreibung	
C1	18.370.31	Lid hinge cover screw		Deckelscharnier-Abdeckungsschrauben	

D		Valve assembly & Panel		Ventilsatz & Konsole	
Pos.	Art. Nr.	Description		Beschreibung	
D1	18.370.05	Screw		Schraube	
D2	18.370.27	Screw		Schraube	
D3	18.371.01	Screw		Schraube	
D4	18.371.02	Washer		U-Scheibe	
D5	18.371.03	Teflonwasher		U-Scheibe Teflon	
D6	18.371.00	Screw		Schraube	

E		Bowl		Kugel	
Pos.	Art. Nr.	Description		Beschreibung	
E1	18.370.10	Screw		Schraube	
E2	18.370.62	Washer		U-Scheibe	
E3	18.370.76	Teflonwasher		U-Scheibe Teflon	
E4	18.370.91	Protection washer bowl		Schutz-Unterlagscheibe Kugel	
E5	18.370.68	Washer		U-Scheibe	
E6	18.370.44	Wing nut		Flügelmutter	

F		Piezo electrode		Piezo-Elektrode	
Pos.	Art. Nr.	Description		Beschreibung	
F1	18.371.01	Screw		Schraube	
F2	18.371.02	Washer		U-Scheibe	
F3	18.371.03	Teflonwasher		U-Scheibe Teflon	
F4	18.371.04	Spring washer		Federring	
F5	18.370.48	Nut		Mutter	
F6	18.371.11	Holder piezo electrode		Halterung Piezo Elektrode	

G		Bottom shelf		Bodenrost	
Pos.	Art. Nr.	Description		Beschreibung	
G1	18.371.05	Woodscrew		Holzschraube	

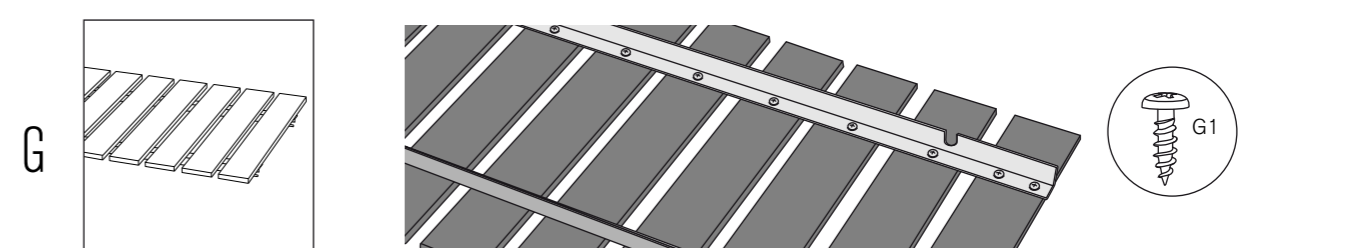
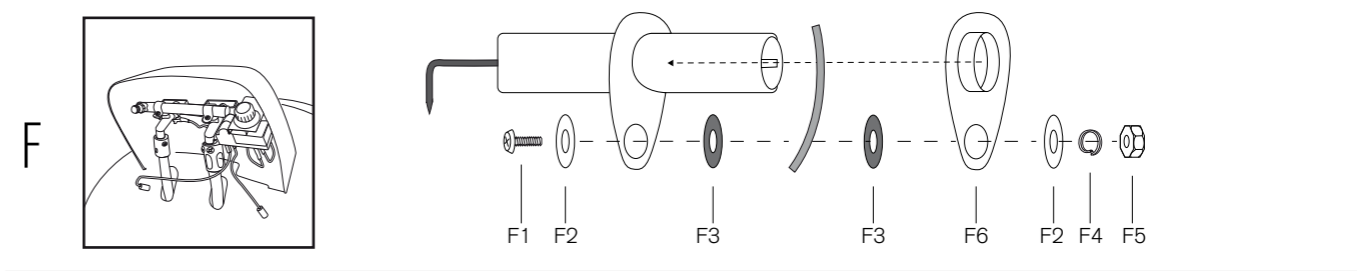
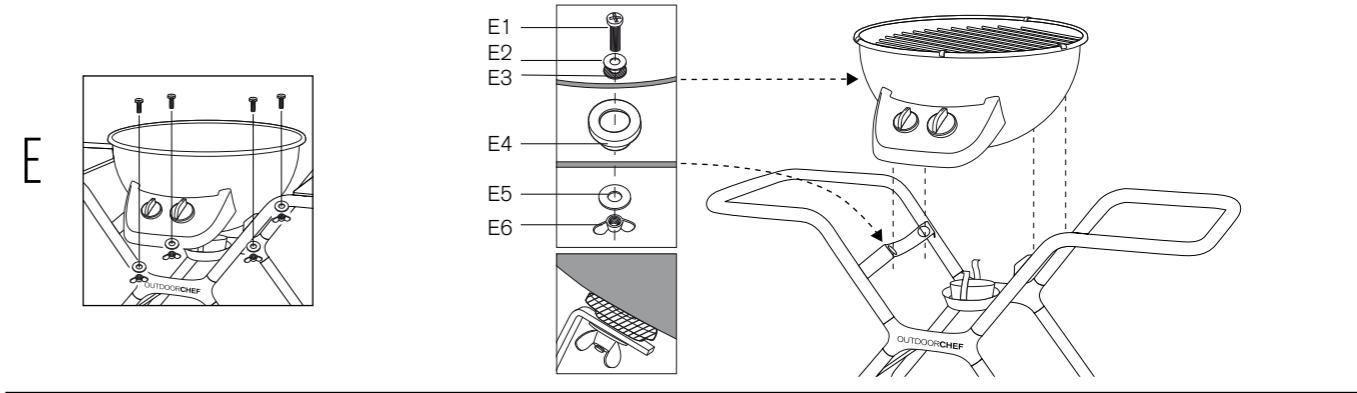
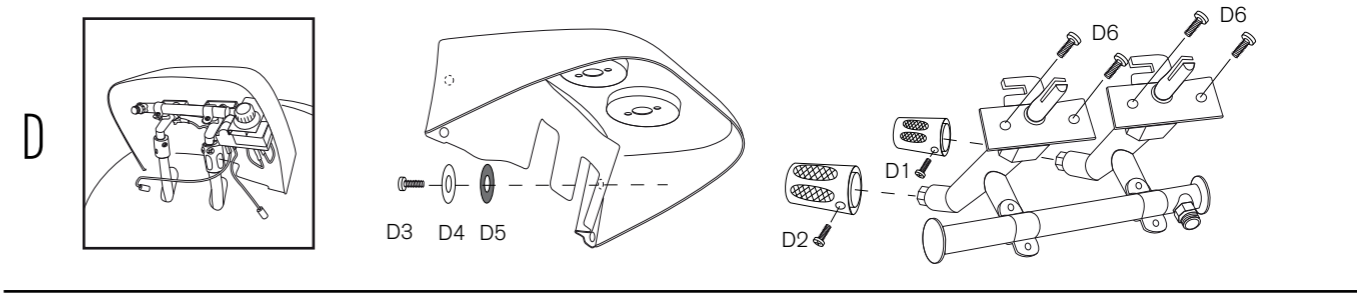
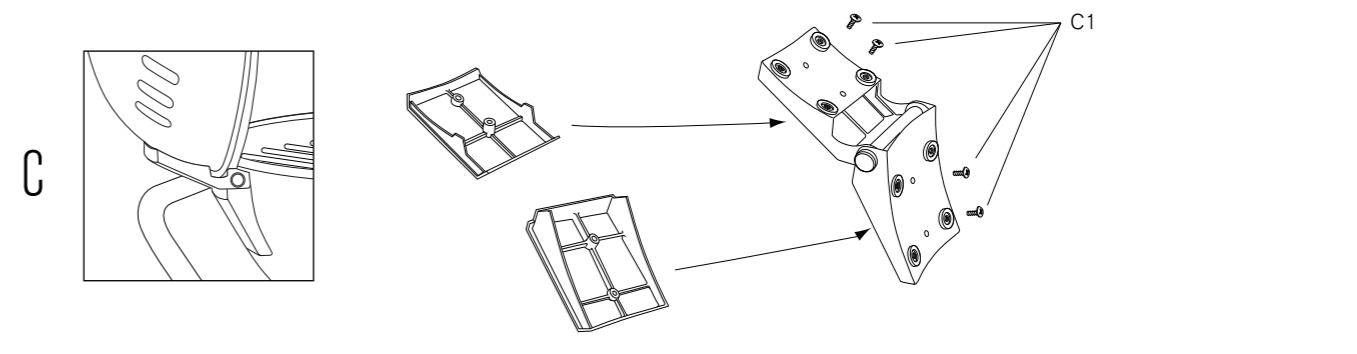
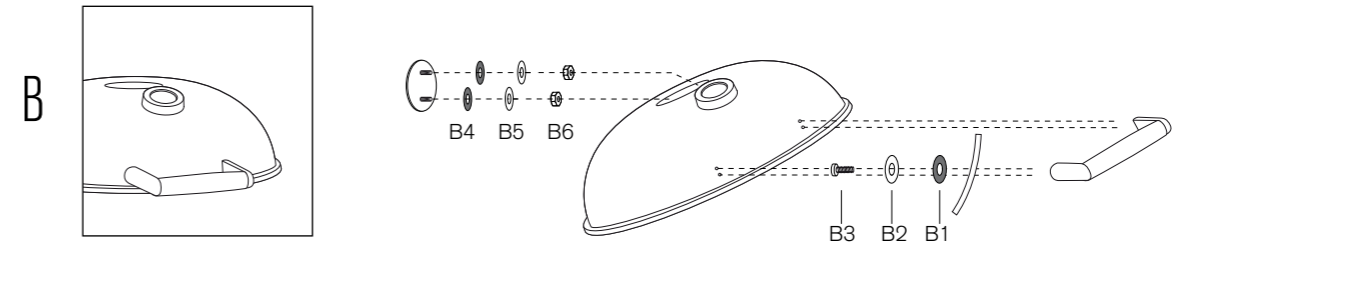
Attention

Please write your serial number on the backside of the manual for future reference. You will find the number on the data plate attached to the trolley or the bottom plate depending on the grill model. OUTDOORCHEF can only supply spare parts and honour warranty returns when the serial number is available.

Achtung

Bitte notieren Sie auf der Rückseite Ihrer Gebrauchsanweisung die Serien-Nummer. Je nach Grillmodell finden Sie die Nummer auf dem Datensticker, welcher sich entweder am Grillgestell oder auf der Bodenplatte befindet. OUTDOORCHEF kann Garantie und Ersatzteillieferungen nur mit der Serien-Nummer bearbeiten.

MONTREUX 570G



MONTREUX 570G

